



Software Suite

Comprehensive and Universal

One software support package for all loggers



Mikros Systems manufactures a range of traffic data loggers ranging from loop only loggers, loop and axle classifiers to complex Weigh In Motion loggers.

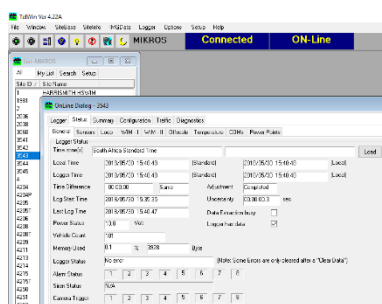
The following is a summary of available software modules that support the data loggers.

The communication modules control the logger configuration and sensor performance parameters of the loggers.

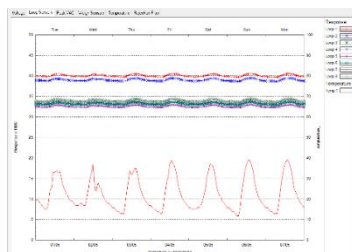
A video module is available to assist in ground truth verification and calibration. In the case of WIM loggers Certificates are generated from the observed data in accordance with the ASTM 1316 and COST 323 standards.

Setup and communications software

TelWin: program allowing for logger configuration, detailed on site and remote monitoring.

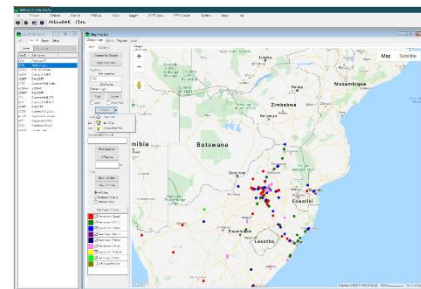


Detailed instrument, sensor and site performance is monitored.



Automated traffic monitoring

TelDialer program that automatically polls connected sites, populates the **TrafBase** data bases and generates network status reports.



Data management

TrafBase: data management program is available for a complete and wide range of validation, data storage and reporting modules.

All raw data is stored in an encoded secure binary format, with exports to a wide range of standard data formats including all relevant FHWA card, RSA, GeoCount and XML formats. EXCEL function exports are completely supported for specialized data selection.

Rigorous data validation is done on an individual vehicle level as well as with intelligent pattern matching procedures.

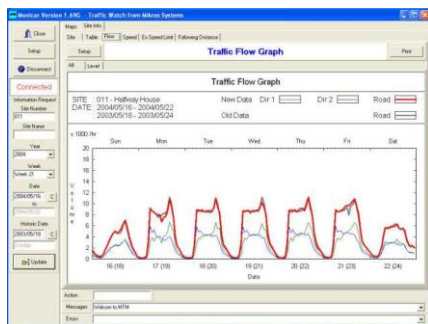
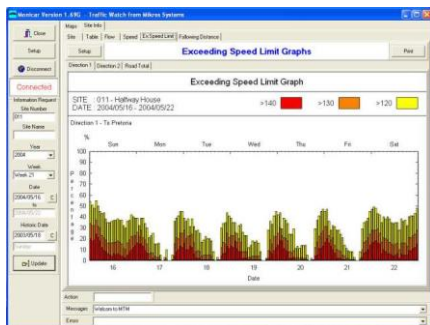
A unique statistical WIM calibration module greatly reduces the cost of traditional calibration procedures.

Standard data storage is on an individual vehicle level. Although aggregation is possible in the data loggers, individual vehicle data is recommended.

WEB based online monitoring

MoniCar: program provides real time web access to TrafBase information.

This provides easy access to traffic information in the TrafBase data base, ideal for public dissemination of information.

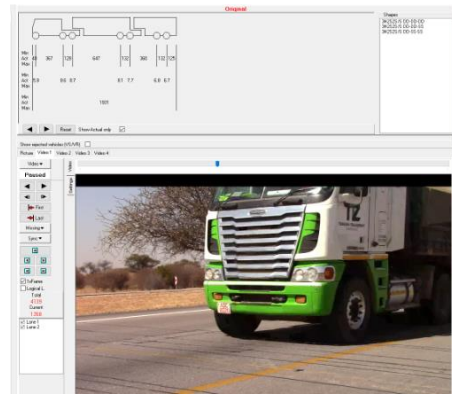


Specialized software

TelNetDLL: DLL software interface for user logger applications. The Windows DLL enables users to link to Mikros Loggers from their own software. Protocol control enabled.

MonCam: Video control program to synchronize recorded video to recorded logger data.

Used for ground truth verification and calibrations.



Loggers supported

- RAKTEL8020 (current)
- RAKTEL4020 (current)
- RAKTEL1020 (current)

- UNITEL4L
- UNITEL8L
- UNITEL4P

- RAKTEL8010
- RAKTEL4010
- RAKTEL1010

- RAKTEL8000
- RAKTEL4000
- RAKTEL1000

- TEL2cm (legacy)
- MiniTEL (legacy)



Mikros Systems
Your Partner in Traffic Engineering for more than 40 years

Mikros Systems (Pty) Ltd
PO Box 30298
Tokai, 7966
South Africa

Mail: mikros@mikros.co.za
Web: www.mikros.co.za




mikros.co.za